

SHERATON PROJECT SPECIAL PRESENTATION



**PLANET
GREEN
METALS**

SPECIAL PRESENTATION

| JANUARY 2025

CSE: PGR

Legal Disclaimer

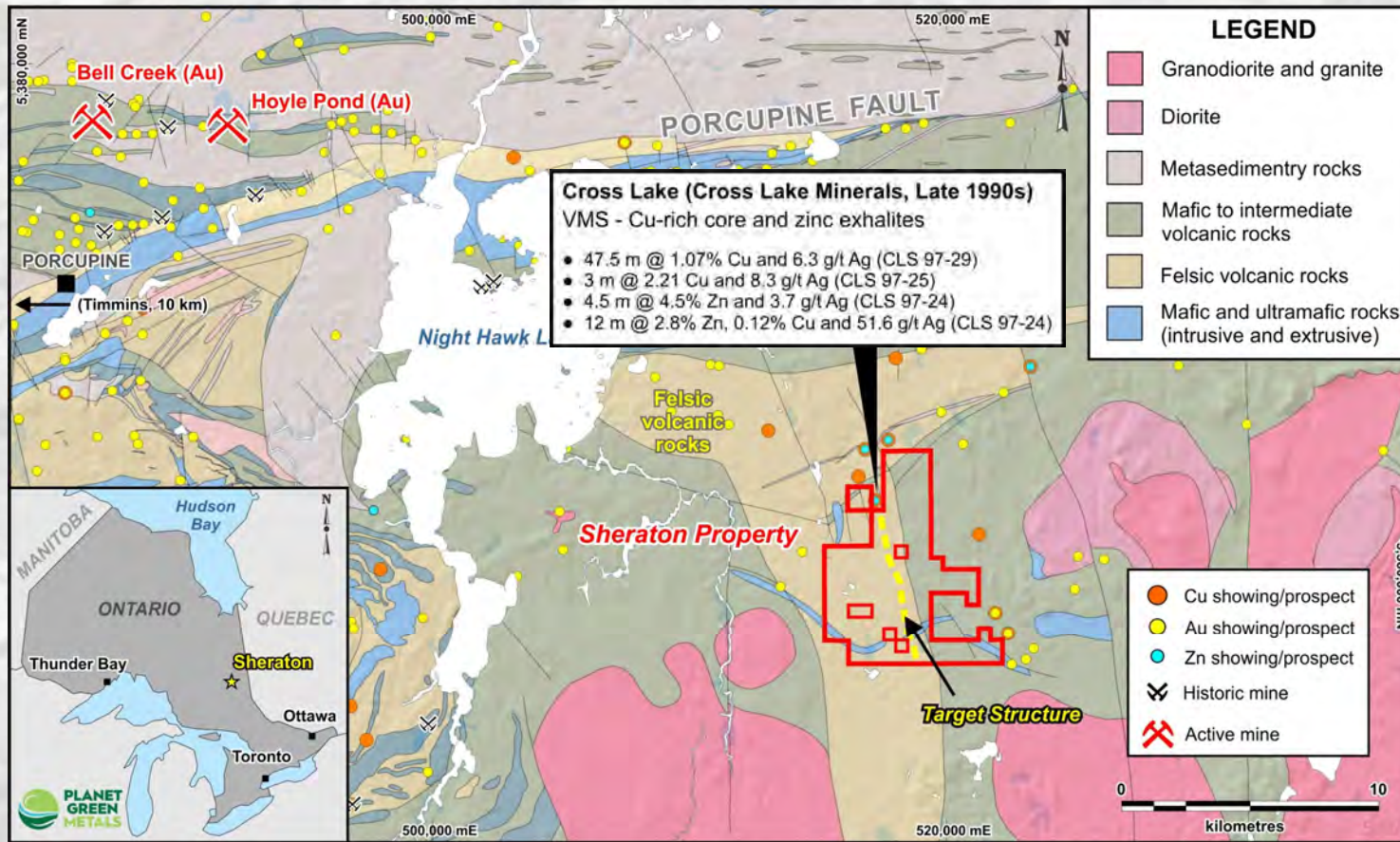
Warning

This management presentation was prepared as a summary overview only of the current affairs of Planet Green Metals Inc (the "Company" and "Planet Green Metals") and was not prepared for the purpose of assisting prospective investors in making a decision to invest in any security. The Company does not make any representation as to the completeness, truth or accuracy of the information contained in this presentation. The Company expressly warns readers not to rely on this information for investment purposes. The information contained herein is not and should not be construed as either a private or private offer or solicitation to purchase securities in the capital stock of the Company, nor as legal, financial or tax advice. The reader is referred to their professional legal, financial and tax advisors regarding investment related decisions respecting the securities of the Company. No securities regulatory authority or similar authority has reviewed or in any way passed on the accuracy or adequacy of this presentation.

Forward-looking Statement

Certain statements in this presentation constitute "forward-looking statements" within the meaning of the Private Securities Litigation Reform Act of 1995 and Canadian securities legislation. Such forward-looking statements involve known and unknown risks, uncertainties and other factors which may cause the actual results, performance or achievements of the Company, or other future events, including forecast production, earnings and cash flows, to be materially different from any future results, performances or achievements or other events expressly or implicitly predicted by such forward-looking statements. Such risks, uncertainties and other factors include, but are not limited to, factors associated with fluctuations in the market price of lithium, uranium, gold, silver, copper and nickel, mining industry risks, recent operating losses, the uncertainty of title to properties, risks associated with foreign operations, environmental risks and hazards, proposed legislation affecting the mining industry, litigation, governmental regulation of the mining industry, properties without known mineable reserves, uncertainty as to calculations of reserves, mineral deposits and grades, the requirement of additional financing, uninsured risks, competition, dependence on key management personnel, potential volatility of the market price of the Company's common shares, dilution and certain anti-takeover effects. Such information contained herein represents management's best judgment as of the date hereof based on information currently available. The Company does not intend to update this information and disclaims any legal liability to the contrary.

SHERATON PROJECT



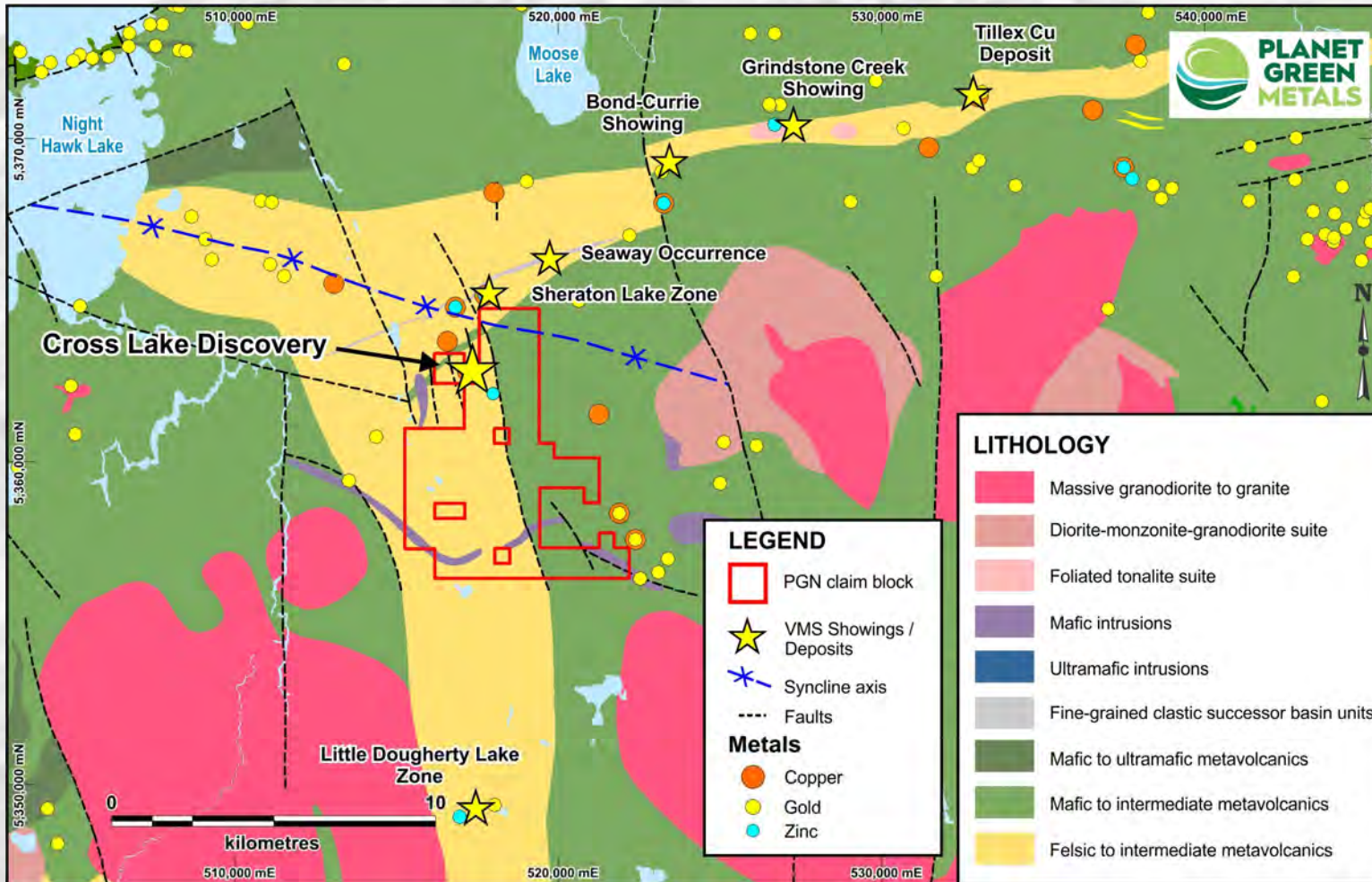
Property Selection

- **3000 ha** Property on the upper contact of a felsic unit (**Rhyolite Package**), which is an excellent **host for VMS style mineralization**
- **Cross Lake Project** drilled in 1990s
- Significant **VMS style mineralization**, including **1 to 3% Copper, 1 to 6% Zinc, up to 911g/t Silver**,
- The Cross Lake (**Cu-Zn-Ag±Au**) **discovery** might be due to early bedded sulphides cut by later copper mineralization

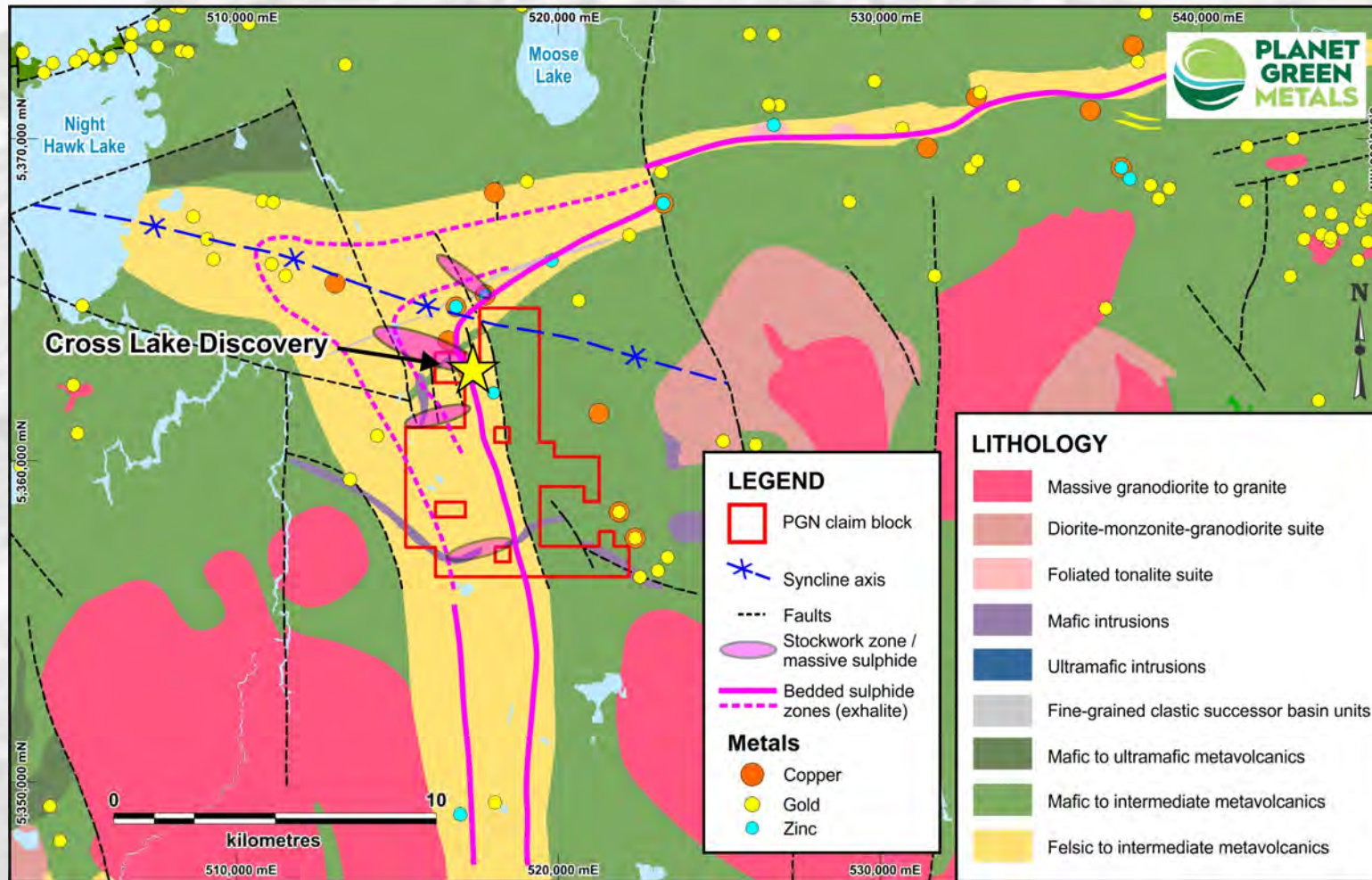
SHERATON PROJECT

Property Key Points:

- Rhyolite Package is associated with **Copper, Zinc, Silver and Gold** mineralization (**stars**)
- Surrounds the **Cross Lake Minerals Discovery (1996)** which had significant **Copper, Zinc and Silver** intersections
- Close to the **axial trace** of the syncline - a **possible reactivation of a feeder zone**. There appear to be more copper showings in the centre of the syncline.
- **Poor exposure on the glacial till covered property has hidden this story**



SHERATON PROJECT

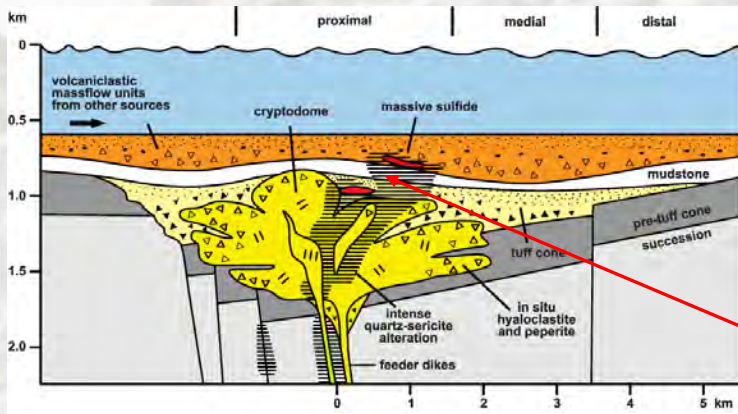


Initial Interpretation:

- Cross Lake is located close to the **axial trace (blue line)** of the syncline, a good place to look for **remobilized mineralization**
- Nearby zinc dominated sulphide mineralization appears to be distal. **We want the metals-rich centre of the system**
- Evidence for **more than one exhalative target horizon (magenta lines)**
- Initial review suggests that Cross Lake is a distal exhalate – **This suggests the main mineralized centre has not been detected!**

SHERATON PROJECT

Simple Model – Single Occurrence - Part of Larger System

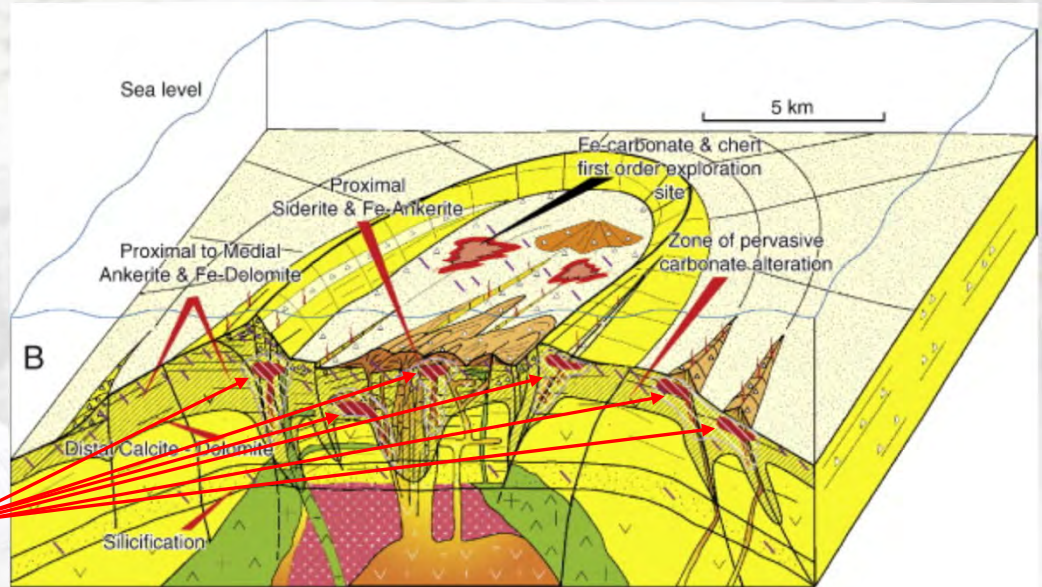


INSTEAD OF A SIMPLIFIED VMS MODEL
(small property)

DO THIS: LOOK AT THE ENTIRE VMS SYSTEM
(LARGE DISTRICT SCALE PROJECT)
MULTIPLE OREBODY POTENTIAL




Full VMS Caldera Model



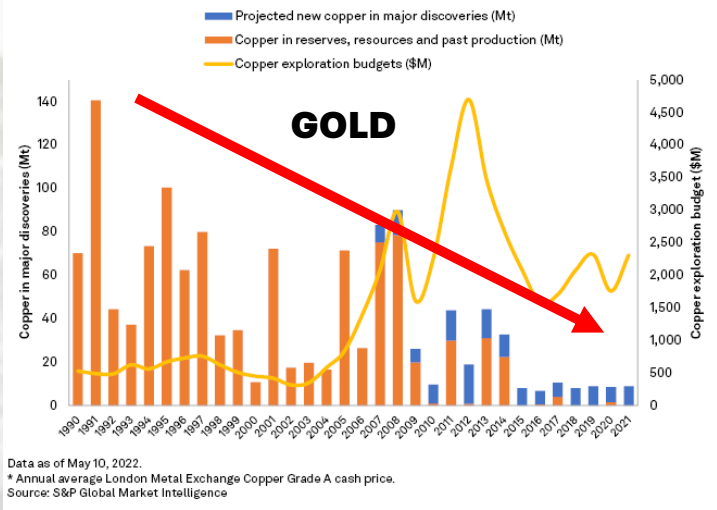
SHERATON VMS Exploration Model

- Thermal event (high-temp rhyolite extrusion) ✓
- Felsic volcanic and volcanoclastic package ✓
- Caldera setting (Need to locate this) ?
- Proximity to faults (possibly reactivated) ✓
- Distal (bedded) zinc sulphides ✓
- Proximal massive chalcopryrite ✓

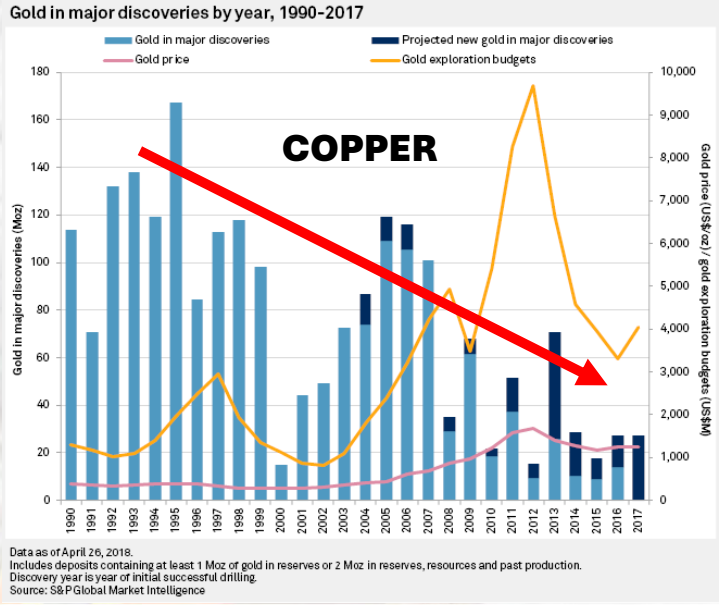
 Orebodies



Discovery drought continues

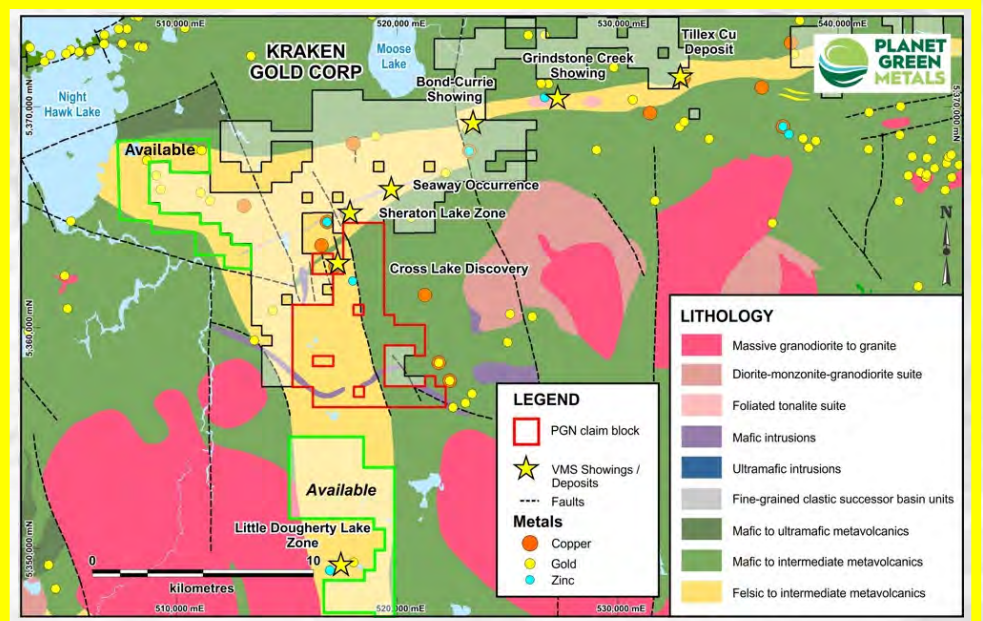


DISCOVERY RATES COLLAPSE



SHERATON PROJECT

UNLESS YOU DO THIS:

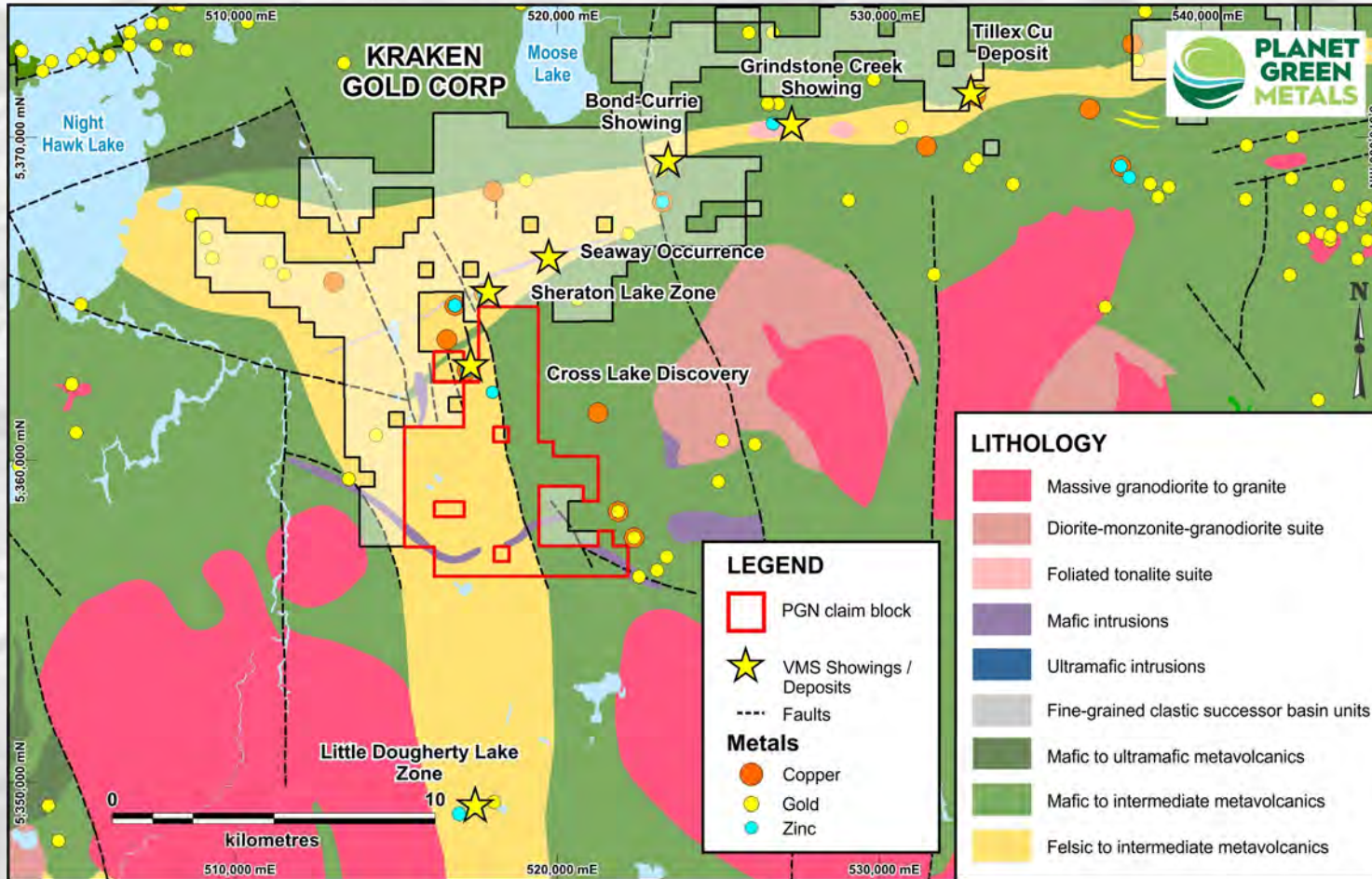


CORRECT AREA SELECTION THAT WORKED IN THE 50's, 60's, 70's, 80's and 90's

DISTRICT SCALE PROJECT
 MULTIPLE GOOD VMS SHOWINGS
 POTENTIAL FOR TWO OREBODIES
 STATE-OF-THE-ART GEOPHYSICS

DO THIS:

SHERATON PROJECT



Expand Property

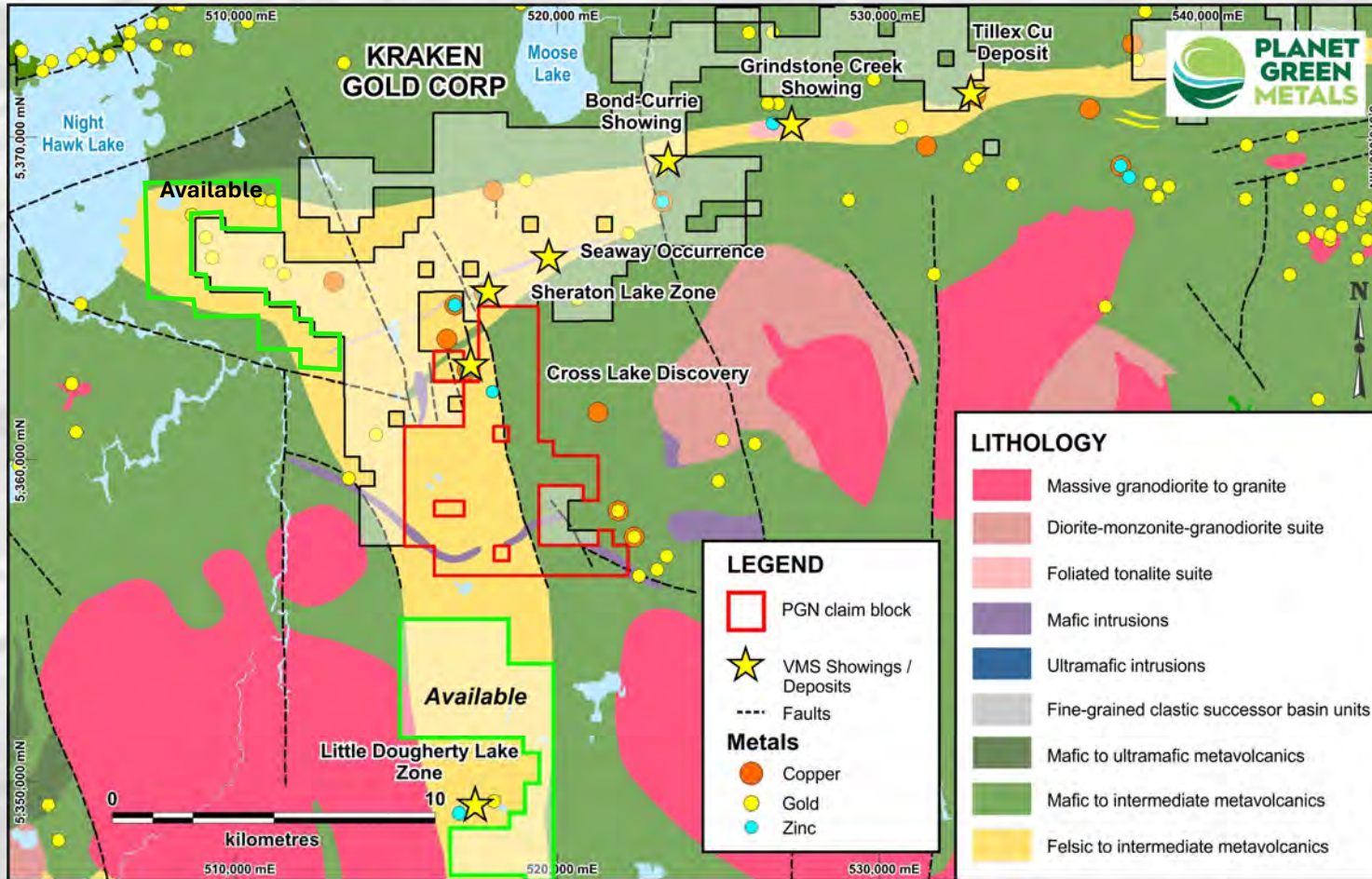
Primary recommended acquisition is the Kraken property:

- **On the axial trace** of the syncline (remobilized sulphides and gold?)
- **Contains a number of showings** that might be feeder zones deeper in the geological package
- **Significant along strike potential** and potential to find the **main mineralized centre**
- **Expands Property 250% to 15,000ha**
- **MOU with Kraken announced**



AND DO THIS:

SHERATON PROJECT



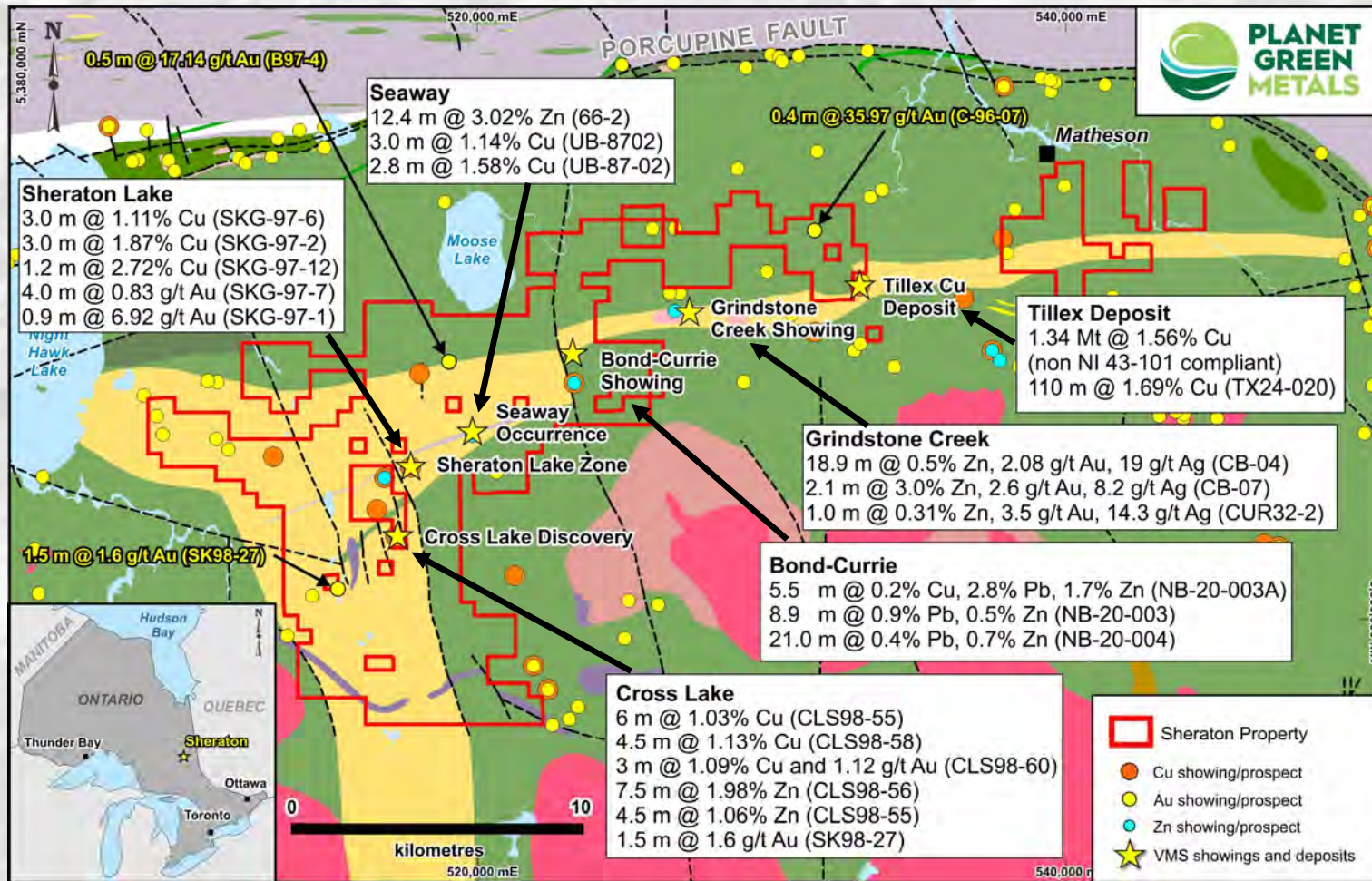
Expand Property

Second planed Acquisition to South and Northwest:

- Claims will be **staked to the South**
- Claims will be **staked to the Northwest**
- These combined with the Kraken Ground will contribute to **significant along strike potential** and potential to find the **main mineralized centre**
- **Expands Property another over the 150% into a DISTRICT PLAY >15,000ha**



SHERATON PROJECT

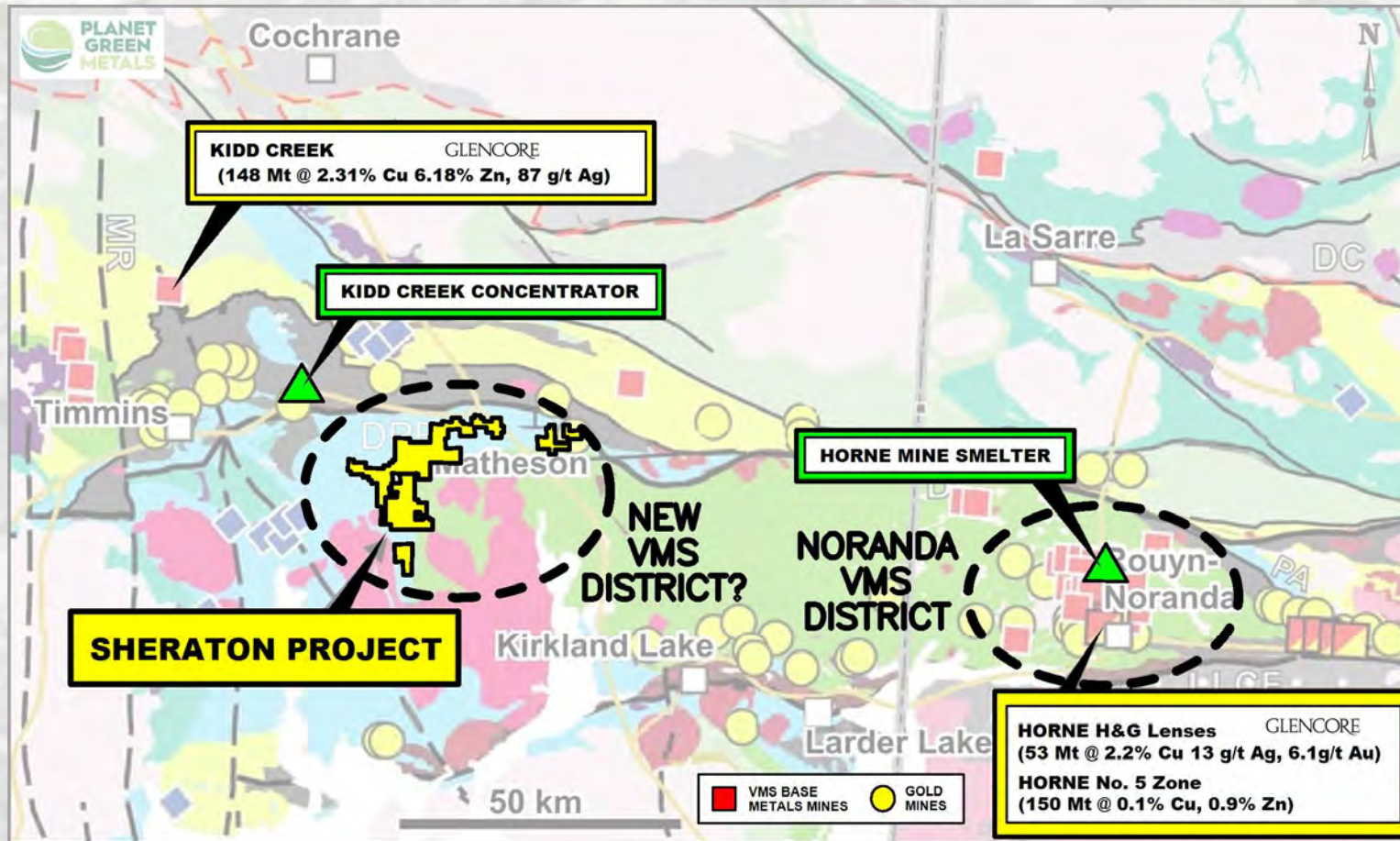


Extremely Fertile VMS Package

Significant Mineralization Everywhere

DISTRICT SCALE PROJECT

SHERATON PROJECT

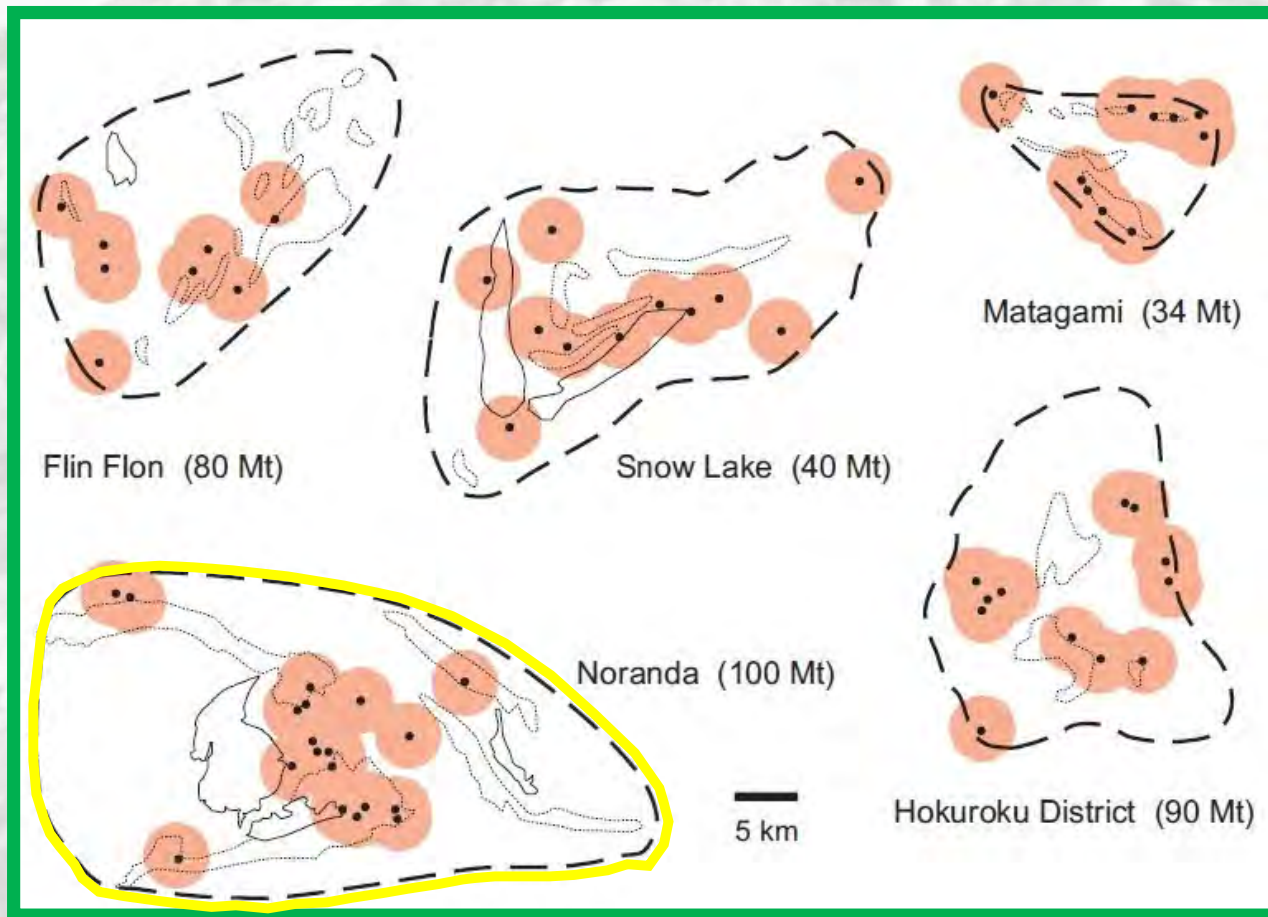


Excellent Location

This Area hosts VMS Mines, good exploration and mining infrastructure

- Nearby **Horne and Kidd Creek mines** are termed “Super Giants” (>50 Mt). They are both worldclass systems
- The Sheraton District Scale Project may be analogous to the Noranda VMS District (100Mt historically)
- Nearby Kidd Creek Concentrator and Horne Smelter, both operated by Glencore
- 35km from Timmins

EXAMPLE VMS DISTRICTS



(A.Galley et al., 2007)

SHERATON PROJECT

Significance of a District Scale Project

- Typically **Multiple Base Metals Discoveries** (shown as black dots)
- Typically **\$4B in value on average for each discovery**
- **A chance to understand the geology of the district and target within the VMS system**
- The **Noranda District (yellow)** mentioned on previous slides, alone hosts **100Mt of ore**.
- VMS deposits can be quite small **1-3 Mt, but very rich (>1% Cu)**.

EXAMPLE DEPOSITS, TONNAGES AND GRADES – NORANDA DISTRICT

Ansil - 1.58 Mt @ 7.2% Cu, 0.9% Zn, 27 g/t Ag, 1.6 g/t Au
Vauze - 0.35 Mt @ 2.94% Cu, 0.94% Zn, 24 g/t Ag, 0.7 g/t Au
Norbec - 3.95 Mt @ 2.77% Cu, 4.50% Zn, 48 g/t Ag, 0.7 g/t Au
East Waite - 1.5 Mt @ 4.13% Cu, 3.26% Zn, 31 g/t Ag, 1.8 g/t Au
Old Waite - 1.12 Mt @ 4.70% Cu, 2.98% Zn, 22 g/t Ag, 1.1 g/t Au
F-Shaft - 0.27 Mt @ 3.40% Cu, 8.60% Zn, 46 g/t Ag, 0.3 g/t Au
Amulet C - 0.57 Mt @ 2.20% Cu, 8.54% Zn, 87 g/t Ag, 0.6 g/t Au
Amulet Lower A - 4.69 Mt @ 5.14% Cu, 5.28% Zn, 44 g/t Ag, 1.4 g/t Au
Amulet Upper A - 0.19 Mt @ 2.37% Cu, 6.12% Zn, 46 g/t Ag, 2.0 g/t Au
Amulet 11 - 0.45 Mt @ 3.65% Cu, 2.38% Zn, 29 g/t Ag, 0.71 g/t Au
Millenbach - 3.56 Mt @ 3.47% Cu, 4.33% Zn, 56 g/t Ag, 1.0 g/t Au
Corbet - 2.78 Mt @ 3.00% Cu, 1.96% Zn, 21 g/t Ag, 1.0 g/t Au
Quemont - 13.8 Mt @ 1.32% Cu, 2.44% Zn, 31 g/t Ag, 5.5 g/t Au
Aldermac - 1.88 Mt @ 4.70% Cu, 7 g/t Ag, 0.3 g/t Au
Deldona - 0.09 Mt @ 0.30% Cu, 5.00% Zn, 26 g/t Ag, 4.1 g/t Au
Delbridge - 0.36 Mt @ 0.55% Cu, 8.6% Zn, 69 g/t Ag, 2.4 g/t Au
Gallen - 2.95 Mt @ 0.07% Cu, 4.77% Zn, 22 g/t Ag, 0.7 g/t Au
Mobrun - 8.64 Mt @ 0.63% Cu, 4.66% Zn, 31 g/t Ag, 1.5 g/t Au
Horne (mined) - 54.3 Mt @ 2.22% Cu, 13 g/t Ag, 6.1 g/t Au
Horne 5 Zone - 150 Mt @ 0.1% Cu, 0.7% Zn, 1.3 g/t Au.

(From PorterGeo, Noranda – Main Commodities)

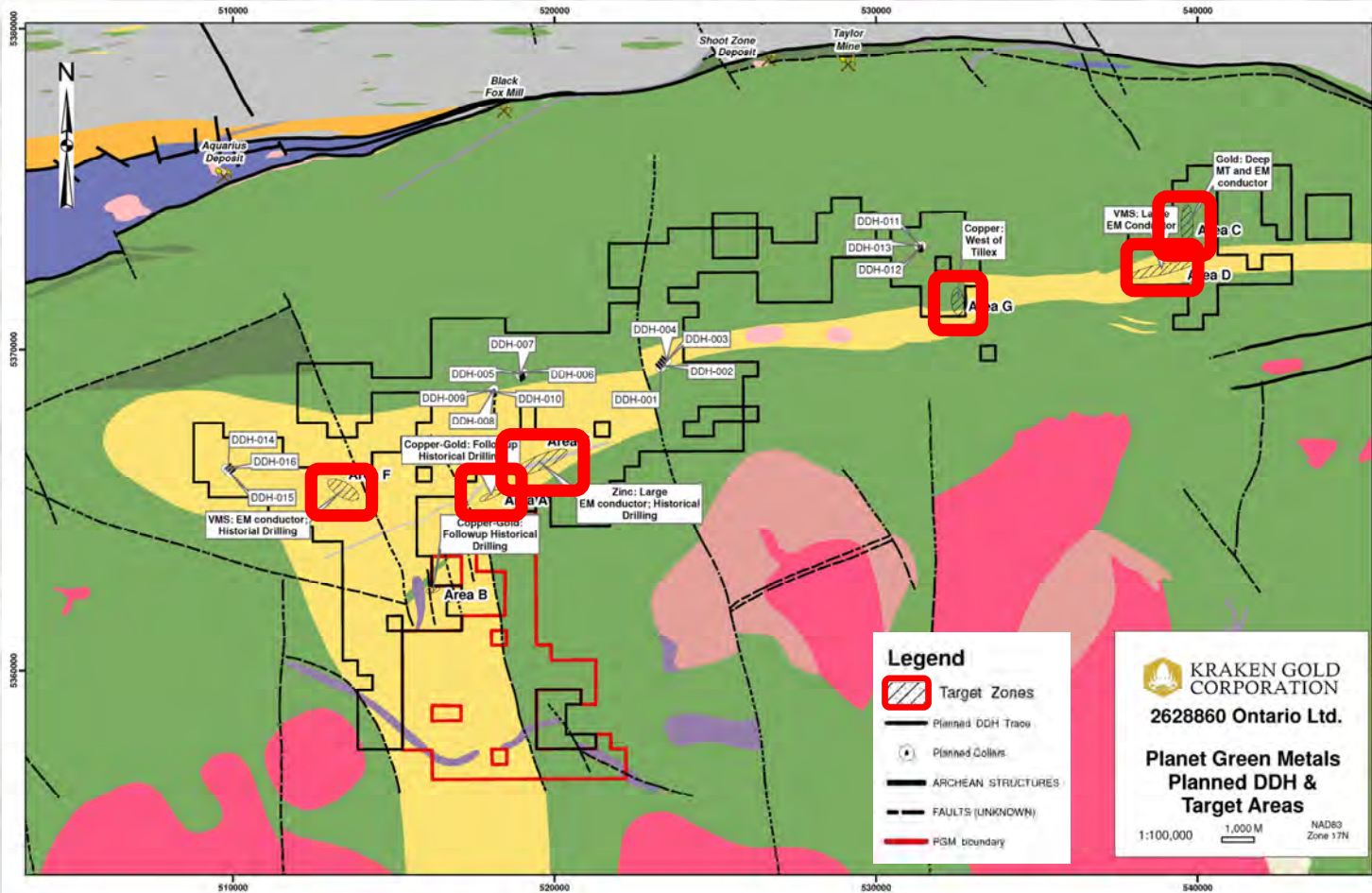
Ideal Target Type

The target models based on the Company's evaluation of available data:

Copper-Zinc-Silver Copper-Gold

- Target Grades:
 - Up to 4.7% Copper**
 - Up to 8.6% Zinc**
 - Up to 123 g/t Silver**
 - Up to 6.1 g/t Gold**
- Average Ore Value: **US\$4B**
- Planet Green Metals predicts there could be multiple mineralized zones and **at least 2 orebodies in this District-Scale Property**

SHERATON PROJECT



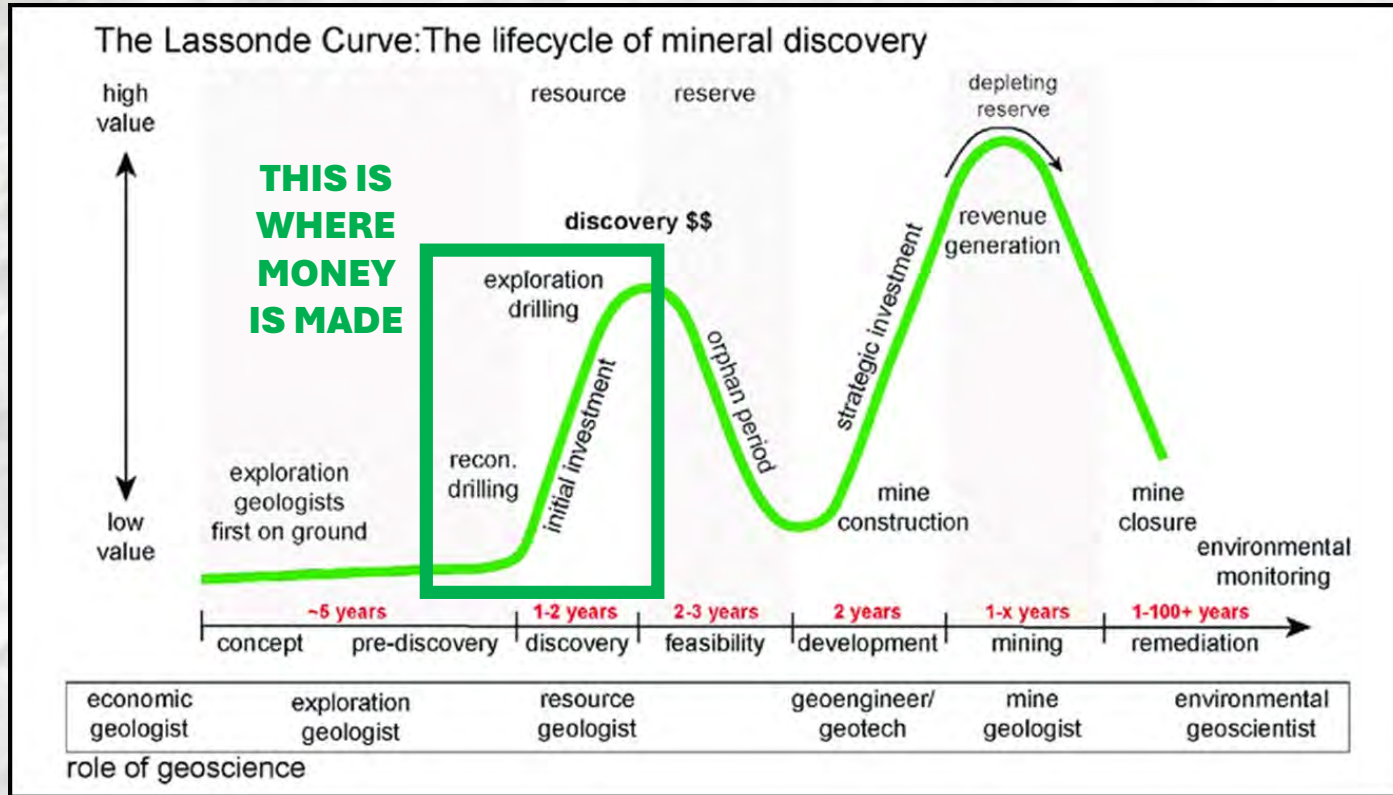
Drill Targets

Kraken Gold has already defined drill targets based on historical work:

- Currently being reviewed by Planet Green Metals
- Emphasizes that this District Scale Project will be **drill ready for mid to late 2025**
- Many of these drill targets are **already mineralized zones**, probably incompletely understood
- **This puts the Project ahead of early stage**

SELL EARLY

SHERATON PROJECT



How PGR Will Create Value for Investors

- We Now have a **District Base Metals Play**
- Could be **drilling in 6 to 8 months**
- We predict this **District Play can host 2 Base Metals Orebodies, worth ~\$4B each**
- Potential for **significant stock price increase** in exploration stage
- **Sell Early** in the Lasso curve

PLANET GREEN METALS COMPANY STATEMENTS

"I am extremely excited that we have assembled this large land package of highly prospective VMS ground in the world-class Abitibi greenstone belt. Exploration by the previous operators identified numerous mineral showings, some with excellent drilling intercepts. We look forward to starting our own exploration program as soon as possible."

- Dr. Sandy Archibald, Technical Director

"We have consolidated a District Play for VMS style base metals near Timmins and we are probably the first to do so within this highly prospective geology. I personally feel that this is a huge development for an early stage junior like us. We stand a chance of a discovery, with a project area this size in geology this favourable. There is a lot of mineralization in this area – we are aiming for the main event."

- Jeremy S. Brett, President and CEO

WHY YOU SHOULD INVEST

DISTRICT SCALE EXPLORATION OPPORTUNITY

COPPER, SILVER, ZINC ALREADY ON/NEAR PROPERTY

3 STYLES OF VMS MINERALIZATION, 7 SHOWINGS

2 BASE METALS OREBODIES PREDICTED WORTH \$4B EACH

PROJECT IS BEYOND EARLY STAGE – ALMOST DRILL READY

GLACIAL COVER – NO PAST PROSPECTING OR MAPPING

HISTORICAL GEOPHYSICS DONE TO ONLY <150m DEPTH

WHY YOU SHOULD INVEST

INVESTMENT OPPORTUNITY

WE WOULD LIKE YOU IN – CLOSING FINANCING SOON

STOCK IS IN THE 5.5 to 6.5 CENTS RANGE

ONLY 33M SHARES ISSUED, 2.66M OPTIONS ISSUED

TIGHT LOYAL SHAREHOLDER BASE

SIGNIFICANT STOCK APPRECIATION POTENTIAL

READY TO PARTNER TO RAISE \$6M+ OVER 2 TO 3 YEARS

MANAGEMENT



**Jeremy S. Brett, M.Sc.,
P.GEO.**
DIRECTOR, PRESIDENT & CEO

Jeremy S. Brett is a seasoned Senior Geophysical Consultant with over 30 years of exploration experience across five continents. He holds a B.Sc. in Geophysics and an M.Sc. in Geology from the University of Toronto and is a licensed Professional Geoscientist (P.Geo.) in Ontario and Newfoundland. He worked with MPH Consulting Limited for 26 years - a globally recognized consulting and project management firm, Jeremy has provided expertise to over 100 Canadian exploration and mining companies, majors and governments across the Americas, Africa, Europe, and Asia. He has held board positions in TSX(V) and AIM-listed mining companies and served on the board of the PDAC, where he chaired the Lands and Regulations Committee. He is a Fellow of the Society of Economic Geologists.



Dr. Sandy Archibald, PH.D., P.GEO
DIRECTOR, TECHNICAL DIRECTOR

Dr. Sandy Archibald is a Senior Exploration Geologist with over 25 years of experience in mineral exploration across the Americas, Europe, and Africa. He brings specialized expertise in a diverse range of minerals, including gold, base metals, uranium, diamonds, copper-nickel, and battery minerals. Sandy holds a Ph.D. in Economic Geology from McGill University and possesses extensive experience in geochemistry. With 22 years of consulting for Aurum Global Exploration, he has established himself as a trusted Professional Geoscientist (P.Geo.). Sandy has also held key board and management positions in AIM and TSX(V) companies and served on the board of PDAC. He is a Fellow of the Society of Economic Geologists.



Nicholas Coltura, BBA
DIRECTOR

Nicholas Coltura, BBA, is an experienced professional in business development and investor relations for public exploration companies. He specializes in marketing, strategic relationship building, and capital raising, having worked with prominent firms such as Rockridge Resources Ltd. (TSX.V: ROCK) and Skyharbour Resources Ltd. (TSX.V: SYH). Nicholas holds a BBA with a focus in Finance from Simon Fraser University, further strengthened by coursework in Finance, Governance, and Compliance for Public Companies.



Robert Turgeon, CPA, BBA
DIRECTOR, CFO

Robert Turgeon has served as CFO for both publicly traded and private mineral exploration companies since 2007. He holds a bachelor's degree in Business Administration with a focus on Accounting from UQTR University and earned his CGA designation in 1980, which merged with the CPA in 2012. Robert has been a sessional instructor in finance and accounting at UQAT's School of Indigenous Studies for 20 years, and for the past 18 years, he has provided training and coaching to Cree Native Organizations in the Eeyou Istchee Territory, Northern Quebec.



Robert Coltura
DIRECTOR

Robert Coltura is a seasoned businessman with significant entrepreneurial experience. As President and principal shareholder of Matalia Investments Ltd., he provides management consulting, corporate finance, and investor relations services to both public and private companies. With over 25 years of experience in various public companies, Robert has held key positions as an officer and director. His extensive background in business development has enabled him to work with a diverse range of companies, helping them to strengthen their position within their respective industries.

ADVISORY BOARD

Perry English

ADVISORY BOARD

Perry, often referred to as a "One-Man Project Generator," was raised in Red Lake and has dedicated his prospecting career to the northwestern Ontario region. Over the past 40 years, he has staked thousands of claims and sold hundreds of properties. In recognition of his contributions to the industry, he was honored with the Ontario Prospectors Association's "Prospector of the Year" award in 2007 and received their Lifetime Achievement Award in 2014. Notably, Perry sold a 67% stake in the Dixie Lake gold property to Great Bear Resources, which was later acquired by Kinross Gold in 2022. The Dixie project was a pivotal acquisition, with Kinross purchasing Great Bear for C\$29.00 per share, valuing the deal at approximately C\$1.8 billion.

Ray Goldie, PHD

ADVISORY BOARD

Ray Goldie is an independent mining analyst, media commentator, and experienced company director, with expertise in royalties and mineral economics. He served as a director at Callinan Royalties Corp. before its acquisition by Altius Minerals Corp. Currently, he holds the position of President of the Prospectors & Developers Association of Canada (PDAC) and is a director at Garibaldi Resources. In 2000, his research on mineral economics led to the trademarking of the term "pinch-point™" which denotes a critical inventory level for a commodity. He holds a B.Sc. from Victoria University in Wellington, New Zealand, an M.Sc. from McGill University, and a Ph.D. from Queen's University.



SHERATON PROJECT